



**A-Series 2U Rackmount Hybrid Camera Server  
16 & 32 Analog + 8 IP Inputs**

- exacqVision Hybrid Server – 16 or 32 analog inputs + 8 IP camera inputs included
- Expandable to 64 IP camera inputs
- Included gigabit NIC, server-class hard drives, universal power supply
- 3 year warranty + 3 year software updates (SSA)

**exacqVision A-Series Hybrid Server - 2U Rackmount, 16 Analog Inputs**

List Price

<b>2U Rackmount Hybrid NVR Server - 16 Analog Inputs 120 ips</b>		
exacqVision Hybrid NVR, 16 analog & 8 IP channel inputs (expandable to 64 IP inputs), 120 ips, 16 analog looped outputs, 1 mux output, 1 spot output, 16 alarm inputs, 16 alarm outputs (1 relay output), 4 audio inputs, RS232/485 PTZ port, Watchdog, Gbit NIC, pre-configured exacqVision client and server software, 2U rackmount chassis, Win 7 Pro OS, universal power supply		
1608-12-0500-R2	500GB	\$5,875
1608-12-1000-R2	1000GB	\$6,050
1608-12-2000-R2	2000GB	\$6,400
1608-12-3000-R2	3000GB	\$6,750
1608-12-4000-R2	4000GB	\$7,100
1608-12-6000-R2	6000GB	\$7,800

<b>2U Rackmount Hybrid NVR Server - 16 Analog Inputs 480 ips</b>		
exacqVision Hybrid NVR, 16 analog & 8 IP channel inputs (expandable to 64 IP inputs), 480 ips, 16 analog looped outputs, 1 mux output, 1 spot output, 16 alarm inputs, 16 alarm outputs (1 relay output), 4 audio inputs, RS232/485 PTZ port, Watchdog, Gbit NIC, pre-configured exacqVision client and server software, 2U rackmount chassis, Win 7 Pro OS, universal power supply		
1608-48-0500-R2	500GB	\$6,775
1608-48-1000-R2	1000GB	\$6,950
1608-48-2000-R2	2000GB	\$7,300
1608-48-3000-R2	3000GB	\$7,650
1608-48-4000-R2	4000GB	\$8,000
1608-48-6000-R2	6000GB	\$8,700

**exacqVision A-Series Hybrid Server - 2U Rackmount, 32 Analog Inputs**

<b>2U Rackmount Hybrid NVR Server - 32 Analog Inputs 240 ips</b>		
exacqVision Hybrid NVR, 32 analog & 8 IP channel inputs (expandable to 64 IP inputs), 240 ips, 2 mux outputs, 2 spot outputs, 16 alarm inputs, 16 alarm outputs (1 relay output), 4 audio inputs, RS232/485 PTZ port, Watchdog, Gbit NIC, pre-configured exacqVision client and server software, 2U rackmount chassis, Win 7 Pro OS, universal power supply		
3208-24-0500-R2	500GB	\$8,325
3208-24-1000-R2	1000GB	\$8,500
3208-24-2000-R2	2000GB	\$8,850
3208-24-3000-R2	3000GB	\$9,200
3208-24-4000-R2	4000GB	\$9,550
3208-24-6000-R2	6000GB	\$10,250

<b>2U Rackmount Hybrid NVR Server - 32 Analog Inputs 960 ips</b>		
exacqVision Hybrid NVR, 32 analog & 8 IP channel inputs (expandable to 64 IP inputs), 960 ips, 2 mux outputs, 2 spot outputs, 16 alarm inputs, 16 alarm outputs (1 relay output), 4 audio inputs, RS232/485 PTZ port, Watchdog, Gbit NIC, pre-configured exacqVision client and server software, 2U rackmount chassis, Win 7 Pro OS, universal power supply		
3208-96-0500-R2	500GB	\$9,700
3208-96-1000-R2	1000GB	\$9,875
3208-96-2000-R2	2000GB	\$10,225
3208-96-3000-R2	3000GB	\$10,575
3208-96-4000-R2	4000GB	\$10,925
3208-96-6000-R2	6000GB	\$11,625

**Linux Available on All Systems Above by appending '-L' to the part number**

e.g.: 1608-48-2000-R2-L Note: Linux option shipped with Linux OS and exacqVision Server installed on 4GB solid state flash drive

**For each A-Series 2U Hybrid Server:**

- 8 IP Camera Licenses Included
- Expandable Up to 64 IP Cameras
- Three Year Software Updates included as standard, additional years orderable



**A-Series 4U Rackmount Hybrid Server  
16 & 32 Analog + 8 IP Inputs**

- exacqVision Hybrid Server – 16 or 32 analog inputs + 8 IP camera inputs included
- Expandable to 64 IP camera inputs
- Included gigabit NIC, server-class removable hard drives, universal power supply
- 3 year warranty + 3 year software updates (SSA)

**exacqVision A-Series Hybrid NVR Server - 4U Rackmount, 16 Analog Inputs**

List Price

4U Rackmount Hybrid NVR Server - 16 Analog Inputs 480 ips		
exacqVision Hybrid NVR, 16 analog & 8 IP channel inputs (expandable to 64 IP inputs), 480 ips, 1 mux output, 1 spot output, 16 alarm inputs, 15 alarm outputs, 1 relay output, 4 audio inputs, RS232/485 PTZ port, Watchdog, Gbit NIC, pre-configured exacqVision client and server software, 4U rackmount chassis, Win 7 Pro OS, universal power supply		
1608-48-8000-R4	8000GB	\$12,800
1608-48-010T-R4	10000GB	\$13,500
1608-48-012T-R4	12000GB	\$14,200
1608-48-014T-R4	14000GB	\$14,900
1608-48-016T-R4	16000GB	\$15,600

4U Rackmount Hybrid NVR Server - RAID-5 Storage - 16 Analog Inputs 480 ips		
exacqVision Hybrid NVR, 16 analog & 8 IP channel inputs (expandable to 64 IP inputs), 480 ips, 1 mux output, 1 spot output, 16 alarm inputs, 15 alarm outputs, 1 relay output, 4 audio inputs, RS232/485 PTZ port, Watchdog, Gbit NIC, pre-configured exacqVision client and server software, 4U rackmount chassis, Win 7 Pro OS, universal power supply		
1608-48-4000-R4-RAID5	4000GB, 3000GB Available	\$9,975
1608-48-6000-R4-RAID5	6000GB, 5000GB Available	\$11,600
1608-48-8000-R4-RAID5	8000GB, 6000GB Available	\$12,800
1608-48-010T-R4-RAID5	10000GB, 8000GB Available	\$13,500
1608-48-012T-R4-RAID5	12000GB, 10000GB Available	\$14,200
1608-48-014T-R4-RAID5	14000GB, 12000GB Available	\$14,900
1608-48-016T-R4-RAID5	16000GB, 14000GB Available	\$15,600

**exacqVision A-Series Hybrid NVR Server - 4U Rackmount, 32 Analog Inputs**

4U Rackmount Hybrid NVR Server - 32 Analog Inputs 240 ips		
exacqVision Hybrid NVR, 32 analog & 8 IP channel inputs (expandable to 64 IP inputs), 240 ips, 2 mux output, 2 spot video outputs, 16 alarm inputs, 15 alarm outputs, 1 relay output, 8 audio inputs, 2 RS232/485 PTZ ports, Watchdog, Gbit NIC, pre-configured exacqVision client and server software, 4U rackmount chassis, Win 7 Pro OS, universal power supply		
3208-24-8000-R4	8000GB	\$14,800
3208-24-010T-R4	10000GB	\$15,500
3208-24-012T-R4	12000GB	\$16,200
3208-24-014T-R4	14000GB	\$16,900
3208-24-016T-R4	16000GB	\$17,600

4U Rackmount Hybrid NVR Server - 32 Analog Inputs 960 ips		
exacqVision Hybrid NVR, 32 analog & 8 IP channel inputs (expandable to 64 IP inputs), 960 ips, 2 mux output, 2 spot video outputs, 16 alarm inputs, 15 alarm outputs, 1 relay output, 8 audio inputs, 2 RS232/485 PTZ ports, Watchdog, Gbit NIC, pre-configured exacqVision client and server software, 4U rackmount chassis, Win 7 Pro OS, universal power supply		
3208-96-8000-R4	8000GB	\$15,800
3208-96-010T-R4	10000GB	\$16,500
3208-96-012T-R4	12000GB	\$17,200
3208-96-014T-R4	14000GB	\$17,900
3208-96-016T-R4	16000GB	\$18,600

4U Rackmount Hybrid NVR Server - RAID-5 Storage - 32 Analog Inputs 960 ips		
exacqVision Hybrid NVR, 32 analog & 8 IP channel inputs (expandable to 64 IP inputs), 960 ips, 2 mux output, 2 spot video outputs, 16 alarm inputs, 15 alarm outputs, 1 relay output, 8 audio inputs, 2 RS232/485 PTZ ports, Watchdog, Gbit NIC, pre-configured exacqVision client and server software, 4U rackmount chassis, Win 7 Pro OS, universal power supply		
3208-96-4000-R4-RAID5	4000GB, 3000GB Available	\$14,400
3208-96-6000-R4-RAID5	6000GB, 5000GB Available	\$15,100
3208-96-8000-R4-RAID5	8000GB, 6000GB Available	\$15,800
3208-96-010T-R4-RAID5	10000GB, 8000GB Available	\$16,500
3208-96-012T-R4-RAID5	12000GB, 10000GB Available	\$17,200
3208-96-014T-R4-RAID5	14000GB, 12000GB Available	\$17,900
3208-96-016T-R4-RAID5	16000GB, 14000GB Available	\$18,600

**Linux Available on All Systems Above by appending '-L' to the part number**

e.g.: 3208-96-012T-R4-L Note: Linux option shipped with Linux OS and exacqVision Server installed on 4GB solid state flash drive

**For each A-Series 4U Hybrid Server:**

- 8 IP Camera Licenses Included
- Expandable Up to 64 IP Cameras
- Three Year Software Updates included as standard, additional years orderable



**A-Series 4U Rackmount Hybrid NVR Server  
48 & 64 Analog + 8 IP Inputs**

- exacqVision Hybrid Server – 48 or 64 analog inputs + 8 IP camera inputs included
- Expandable to 64 IP camera inputs
- Included gigabit NIC, server-class removable hard drives, universal power supply
- 3 year warranty + 3 year software updates (SSA)

**exacqVision A-Series Hybrid NVR Server - 4U Rackmount, 48 Analog Inputs**

List Price

4U Rackmount Hybrid NVR Server - 48 Analog Inputs 1440 ips		
exacqVision Hybrid NVR, 48 analog & 8 IP channel inputs (expandable to 64 IP inputs), 1440 ips, 3 mux output, 3 spot video outputs, 8 alarm inputs, 1 relay output, 1 audio input, RS232/485 PTZ port, Watchdog, Gbit NIC, pre-configured exacqVision client and server software, 4U rackmount chassis, Win 7 Pro OS, universal power supply		
4808-144-4000-R4	4000GB	\$17,900
4808-144-6000-R4	6000GB	\$18,600
4808-144-8000-R4	8000GB	\$19,300
4808-144-010T-R4	10000GB	\$20,000
4808-144-012T-R4	12000GB	\$20,700
4808-144-014T-R4	14000GB	\$21,400
4808-144-016T-R4	16000GB	\$22,100

4U Rackmount Hybrid NVR Server - RAID-5 Storage - 48 Analog Inputs 1440 ips		
exacqVision Hybrid NVR, 48 analog & 8 IP channel inputs (expandable to 64 IP inputs), 1440 ips, 3 mux output, 3 spot video outputs, 8 alarm inputs, 1 relay output, 1 audio input, RS232/485 PTZ port, Watchdog, Gbit NIC, pre-configured exacqVision client and server software, 4U rackmount chassis, Win 7 Pro OS, universal power supply		
4808-144-4000-R4-RAID5	4000GB, 3000GB Available	\$17,900
4808-144-6000-R4-RAID5	6000GB, 5000GB Available	\$18,600
4808-144-8000-R4-RAID5	8000GB, 6000GB Available	\$19,300
4808-144-010T-R4-RAID5	10000GB, 8000GB Available	\$20,000
4808-144-012T-R4-RAID5	12000GB, 10000GB Available	\$20,700
4808-144-014T-R4-RAID5	14000GB, 12000GB Available	\$21,400
4808-144-016T-R4-RAID5	16000GB, 14000GB Available	\$22,100

**exacqVision A-Series Hybrid NVR Server - 4U Rackmount, 64 Analog Inputs**

4U Rackmount Hybrid NVR Server - 64 Analog Inputs 1920 ips		
exacqVision Hybrid NVR, 64 analog & 8 IP channel inputs (expandable to 64 IP inputs), 1920 ips, 4 mux output, 4 spot video outputs, 8 alarm inputs, 1 relay output, 1 audio input, RS232/485 PTZ port, Watchdog, Gbit NIC, pre-configured exacqVision client and server software, 4U rackmount chassis, Win 7 Pro OS, universal power supply		
6408-192-4000-R4	4000GB	\$20,900
6408-192-6000-R4	6000GB	\$21,600
6408-192-8000-R4	8000GB	\$22,300
6408-192-010T-R4	10000GB	\$23,000
6408-192-012T-R4	12000GB	\$23,700
6408-192-014T-R4	14000GB	\$24,400
6408-192-016T-R4	16000GB	\$25,100

4U Rackmount Hybrid NVR Server - RAID-5 Storage - 64 Analog Inputs 1920 ips		
exacqVision Hybrid NVR, 64 analog & 8 IP channel inputs (expandable to 64 IP inputs), 1920 ips, 4 mux output, 4 spot video outputs, 8 alarm inputs, 1 relay output, 1 audio input, RS232/485 PTZ port, Watchdog, Gbit NIC, pre-configured exacqVision client and server software, 4U rackmount chassis, Win 7 Pro OS, universal power supply		
6408-192-4000-R4-RAID5	4000GB, 3000GB Available	\$20,900
6408-192-6000-R4-RAID5	6000GB, 5000GB Available	\$21,600
6408-192-8000-R4-RAID5	8000GB, 6000GB Available	\$22,300
6408-192-010T-R4-RAID5	10000GB, 8000GB Available	\$23,000
6408-192-012T-R4-RAID5	12000GB, 10000GB Available	\$23,700
6408-192-014T-R4-RAID5	14000GB, 12000GB Available	\$24,400
6408-192-016T-R4-RAID5	16000GB, 14000GB Available	\$25,100

**Linux Available on All Systems Above by appending '-L' to the part number**

e.g.: 6408-192-4000-R4-L Note: Linux option shipped with Linux OS and exacqVision Server installed on 4GB solid state flash drive

**For each A-Series 4U Hybrid Server:**

- 8 IP Camera Licenses Included
- Expandable Up to 64 IP Cameras
- Three Year Software Updates included as standard, additional years orderable



**A-Series Desktop Hybrid NVR Server  
4 & 16 Analog + 8 IP Inputs**

- exacqVision Hybrid Server – 4 or 16 analog + 4 or 8 IP camera inputs included
- Expandable to 64 IP camera inputs
- Included gigabit NIC, server-class hard drives, universal power supply
- 3 year warranty + 3 year software updates (SSA)

**exacqVision A-Series Hybrid Server - Space-Saver Desktop, 4 Analog Inputs**

List Price

Desktop Hybrid NVR Server - 4 Analog Inputs 120 ips		
exacqVision Hybrid NVR 4 analog & 4 IP channel inputs (expandable to 64 IP inputs), 120 ips, 1 mux output, 8 alarm inputs, 1 relay output, 1 audio input, RS232/485 PTZ port, Watchdog, Gbit NIC, pre-configured exacqVision client and server software, Desktop chassis, Win 7 Pro OS, universal power supply		
0404-12-0250-DT	250GB	\$3,770
0404-12-0500-DT	500GB	\$3,860
0404-12-1000-DT	1000GB	\$4,035
0404-12-2000-DT	2000GB	\$4,385
0404-12-4000-DT	4000GB	\$5,085

**exacqVision A-Series Hybrid Server - Space-Saver Desktop, 16 Analog Inputs**

Desktop Hybrid NVR Server - 16 Analog Inputs 120 ips		
exacqVision Hybrid NVR, 16 analog & 8 IP channel inputs (expandable to 64 IP inputs), 120 ips, 1 mux output, 8 alarm inputs, 1 relay output, 1 audio input, RS232/485 PTZ port, Watchdog, Gbit NIC, pre-configured exacqVision client and server software, Desktop chassis, Win 7 Pro OS, universal power supply		
1608-12-0500-DT	500GB	\$4,995
1608-12-1000-DT	1000GB	\$5,170
1608-12-2000-DT	2000GB	\$5,520
1608-12-4000-DT	4000GB	\$6,220

Desktop Hybrid NVR Server - 16 Analog Inputs 480 ips		
exacqVision Hybrid NVR, 16 analog & 8 IP channel inputs (expandable to 64 IP inputs), 480 ips, 1 mux output, 8 alarm inputs, 1 relay output, 1 audio input, RS232/485 PTZ port, Watchdog, Gbit NIC, pre-configured exacqVision client and server software, Desktop chassis, Win 7 Pro OS, universal power supply		
1608-48-0500-DT	500GB	\$5,825
1608-48-1000-DT	1000GB	\$6,000
1608-48-2000-DT	2000GB	\$6,350
1608-48-4000-DT	4000GB	\$7,050

**Linux Available on All Systems Above by appending '-L' to the part number**

e.g.: 0404-12-1000-DT-L Note: Linux option shipped with Linux OS and exacqVision Server installed on 4GB solid state flash drive

**For each A-Series Desktop Hybrid Server:**

- 4 or 8 IP Camera Licenses Included
- Expandable Up to 64 IP Cameras
- Three Year Software Updates included as standard, additional years orderable



**A-Series 2U & 4U Rackmount IP Camera Server**

- exacqVision NVR Server – exacqVision software Pre-Installed
- From 1 to 64 IP camera inputs
- Included gigabit NIC, server-class hard drives, universal power supply
- 3 year warranty + 3 year software updates (SSA)

**exacqVision A-Series IP Server - 2U Rackmount, connect up to 64 IP Cameras**

List Price

<b>2U Rackmount IP Server</b>		
exacqVision IP Server, 2U rackmount chassis, pre-configured exacqVision client and server software, enterprise-class hard drives, Win 7 Pro OS, mouse, keyboard, universal power supply, DVD-RW, Gigabit NIC		
IPS-0500-R2	500GB	\$2,660
IPS-1000-R2	1000GB	\$2,835
IPS-2000-R2	2000GB	\$3,185
IPS-3000-R2	3000GB	\$3,535
IPS-4000-R2	4000GB	\$3,885
IPS-6000-R2	6000GB	\$4,585

**exacqVision A-Series IP Server - 4U Rackmount, connect up to 64 IP Cameras**

<b>4U Rackmount IP Server</b>		
exacqVision IP Server, 4U rackmount chassis, pre-configured exacqVision client and server software, removable enterprise-class hard drives, Win 7 Pro OS, mouse, keyboard, universal power supply, DVD-RW, Gigabit NIC		
IPS-8000-R4	8000GB	\$8,800
IPS-010T-R4	10000GB	\$9,500
IPS-012T-R4	12000GB	\$10,200
IPS-014T-R4	14000GB	\$10,900
IPS-016T-R4	16000GB	\$11,600

<b>4U Rackmount IP Server - RAID-5 Storage</b>		
exacqVision IP Server, RAID-5 Storage, 4U rackmount chassis, pre-configured exacqVision client and server software, removable enterprise-class hard drives, Win 7 Pro OS, mouse, keyboard, universal power supply, DVD-RW, Gigabit NIC. Redundant power supply optionally available.		
IPS-4000-R4-RAID5	4000GB, 3000GB Available	\$7,400
IPS-6000-R4-RAID5	6000GB, 5000GB Available	\$8,100
IPS-8000-R4-RAID5	8000GB, 6000GB Available	\$8,800
IPS-010T-R4-RAID5	10000GB, 8000GB Available	\$9,500
IPS-012T-R4-RAID5	12000GB, 10000GB Available	\$10,200
IPS-014T-R4-RAID5	14000GB, 12000GB Available	\$10,900
IPS-016T-R4-RAID5	16000GB, 14000GB Available	\$11,600

**Linux Available on All Systems Above by appending '-L' to the part number**

e.g.: IPS-010T-R4-L

Note: Linux option shipped with Linux OS and exacqVision Server installed on 4GB solid state flash drive

**For each exacqVision A-Series 2U & 4U IP server:**

- Up to 64 IP camera licenses can be added
- Three Year Software Updates included as standard, additional years orderable



**A-Series Desktop IP Camera Server**

- exacqVision NVR Server – exacqVision software Pre-Installed
- Space-saving desktop chassis
- From 1 to 64 IP camera inputs
- Included gigabit NIC, server-class hard drives, universal power supply
- 3 year warranty + 3 year software updates (SSA)

exacqVision A-Series IP Server - Desktop, IP Cameras, connect up to 64 IP Cameras

List Price

Desktop IP Server		
exacqVision IP Server, space-saving desktop chassis, pre-configured exacqVision client and server software, enterprise-class hard drives, Win 7 Pro OS, mouse, keyboard, universal power supply, DVD-RW, Gigabit NIC		
IPS-0250-DT	250GB	\$2,110
IPS-0500-DT	500GB	\$2,200
IPS-1000-DT	1000GB	\$2,375
IPS-2000-DT	2000GB	\$2,725
IPS-4000-DT	4000GB	\$3,425

**Linux Available on All Systems Above by appending '-L' to the part number**

e.g.: IPS-1000-DT-L

Note: Linux option shipped with Linux OS and exacqVision Server installed on 4GB solid state flash drive

**For each exacqVision A-Series Desktop IP server:**

- Up to 64 IP camera licenses can be added
- Three Year Software Updates included as standard, additional years orderable

**exacqVision** **Z**



**Z-Series Enterprise Hybrid Camera Servers**

- Z-Series Hybrid Servers, 16, 32, 48 or 64 Analog inputs
- 8 IP camera licenses included, up to 96 IP camera inputs available
- RAID-5 or RAID-6 enterprise-class storage standard
- Field upgradeable, hot-swap front-accessible drive bays
- Quad-core Xeon processors & Dual GBit NICs
- Operating system & exacqVision server application on 40GB SSD
- 3 year warranty + 3 year software updates (SSA)

**exacqVision Z-Series Hybrid Server - 2U Rackmount**

List Price

<b>2U Z-Series 8-Bay Rackmount Hybrid Server - 16 Analog Inputs 480 ips</b>		
exacqVision Z-Series Hybrid Server, 2U rackmount chassis, 8 front-accessible drive bays, 16 analog inputs with loop-thru, 480 ips, 8 IP channel inputs (expandable to 96 IP inputs), exacqVision client and server software and Windows 7 Pro OS preconfigured on internal 40GB SSD, keyboard & mouse, redundant universal power supply, DVD-RW, Dual Gigabit NIC, RAID-5		
1608-48-8TB-R2HZ-RAID	8TB, 6TB Available	\$14,800
1608-48-12TB-R2HZ-RAID	12TB, 10TB Available	\$16,200
1608-48-16TB-R2HZ-RAID	16TB, 14TB Available	\$17,600

<b>2U Z-Series 8-Bay Rackmount Hybrid Server - 32 Analog Inputs 960 ips</b>		
exacqVision Z-Series Hybrid Server, 2U rackmount chassis, 8 front-accessible drive bays, 32 analog inputs, 480 ips, 8 IP channel inputs (expandable to 96 IP inputs), exacqVision client and server software and Windows 7 Pro OS preconfigured on internal 40GB SSD, keyboard & mouse, redundant universal power supply, DVD-RW, Dual Gigabit NIC, RAID-5		
3208-96-8TB-R2HZ-RAID	8TB, 6TB Available	\$15,950
3208-96-12TB-R2HZ-RAID	12TB, 10TB Available	\$17,350
3208-96-16TB-R2HZ-RAID	16TB, 14TB Available	\$18,750

**exacqVision Z-Series Hybrid Server - 4U Rackmount**

<b>4U Z-Series 20-Bay Rackmount Hybrid Server - 16 Analog Inputs 480 ips</b>		
exacqVision Z-Series Hybrid Server, 4U rackmount chassis, 20 front-accessible drive bays, 16 analog inputs with loop-thru, 480 ips, 8 IP channel inputs (expandable to 96 IP inputs), exacqVision client and server software and Windows 7 Pro OS preconfigured on internal 40GB SSD, keyboard & mouse, redundant universal power supply, DVD-RW, Dual Gigabit NIC, RAID-6		
1608-48-24TB-R4HZ-RAID	24TB, 20TB Available	\$26,800
1608-48-28TB-R4HZ-RAID	28TB, 24TB Available	\$28,200
1608-48-32TB-R4HZ-RAID	32TB, 28TB Available	\$29,600
1608-48-36TB-R4HZ-RAID	36TB, 32TB Available	\$31,000
1608-48-40TB-R4HZ-RAID	40TB, 36TB Available	\$32,400

<b>4U Z-Series 20-Bay Rackmount Hybrid Server - 32 Analog Inputs 960 ips</b>		
exacqVision Z-Series Hybrid Server, 4U rackmount chassis, 20 front-accessible drive bays, 32 analog inputs, 960 ips, 8 IP channel inputs (expandable to 96 IP inputs), exacqVision client and server software and Windows 7 Pro OS preconfigured on internal 40GB SSD, keyboard & mouse, redundant universal power supply, DVD-RW, Dual Gigabit NIC, RAID-6		
3208-96-24TB-R4HZ-RAID	24TB, 20TB Available	\$27,800
3208-96-28TB-R4HZ-RAID	28TB, 24TB Available	\$29,200
3208-96-32TB-R4HZ-RAID	32TB, 28TB Available	\$30,600
3208-96-36TB-R4HZ-RAID	36TB, 32TB Available	\$32,000
3208-96-40TB-R4HZ-RAID	40TB, 36TB Available	\$33,400

<b>4U Z-Series 20-Bay Rackmount Hybrid Server - 48 Analog Inputs 1440 ips</b>		
exacqVision Z-Series Hybrid Server, 4U rackmount chassis, 20 front-accessible drive bays, 48 analog inputs, 1440 ips, 8 IP channel inputs (expandable to 96 IP inputs), exacqVision client and server software and Windows 7 Pro OS preconfigured on internal 40GB SSD, keyboard & mouse, redundant universal power supply, DVD-RW, Dual Gigabit NIC, RAID-6		
4808-144-24TB-R4HZ-RAID	24TB, 20TB Available	\$31,400
4808-144-28TB-R4HZ-RAID	28TB, 24TB Available	\$32,800
4808-144-32TB-R4HZ-RAID	32TB, 28TB Available	\$34,200
4808-144-36TB-R4HZ-RAID	36TB, 32TB Available	\$35,600
4808-144-40TB-R4HZ-RAID	40TB, 36TB Available	\$37,000

<b>4U Z-Series 20-Bay Rackmount Hybrid Server - 64 Analog Inputs 1920 ips</b>		
exacqVision Z-Series Hybrid Server, 4U rackmount chassis, 20 front-accessible drive bays, 64 analog inputs, 1920 ips, 8 IP channel inputs (expandable to 96 IP inputs), exacqVision client and server software and Windows 7 Pro OS preconfigured on internal 40GB SSD, keyboard & mouse, redundant universal power supply, DVD-RW, Dual Gigabit NIC, RAID-6		
6408-192-24TB-R4HZ-RAID	24TB, 20TB Available	\$33,400
6408-192-28TB-R4HZ-RAID	28TB, 24TB Available	\$34,800
6408-192-32TB-R4HZ-RAID	32TB, 28TB Available	\$36,200
6408-192-36TB-R4HZ-RAID	36TB, 32TB Available	\$37,600
6408-192-40TB-R4HZ-RAID	40TB, 36TB Available	\$39,000

<b>Hard Drive + Caddy for all Z-Series Systems</b>		
5000-32000	2TB drive + Caddy for all Z-Series Systems	\$700

**Linux Available on All Systems Above by appending '-L' to the part number**  
e.g.: 3208-96-32TB-R4HZ-RA Note: Z-Series Linux option shipped with Linux OS and exacqVision Server installed on 40GB SSD



**Z-Series Enterprise IP Camera Servers**

- 8 IP camera licenses included, up to 96 IP camera inputs available
- RAID-5 or RAID-6 enterprise-class storage standard
- Field upgradeable, hot-swap front-accessible drive bays
- Quad-core Xeon processors & Dual GBit NICs
- Operating system & exacqVision server application on 40GB SSD
- 3 year warranty + 3 year software updates (SSA)

**exacqVision Z-Series IP Server, 2U Rackmount, Connect up to 96 IP Cameras**

List Price

<b>2U 8-Bay Rackmount IP Server</b>		
exacqVision Z-Series IP Server, 2U rackmount chassis, 8 front-accessible drive bays, 8 IP channel inputs (expandable to 96 IP inputs), exacqVision client and server software and Windows 7 Pro OS preconfigured on internal 40GB SSD, keyboard & mouse, redundant universal power supply, DVD-RW, Dual Gigabit NIC, RAID-5		
IPZ08-08TB-R2-RAID	8TB, 6TB Available	\$11,800
IPZ08-12TB-R2-RAID	12TB, 10TB Available	\$13,200
IPZ08-16TB-R2-RAID	16TB, 14TB Available	\$14,600

**exacqVision Z-Series IP Server, 3U Rackmount, Connect up to 96 IP Cameras**

<b>3U 16-Bay Rackmount IP Server</b>		
exacqVision Z-Series IP Server, 3U rackmount chassis, 16 front-accessible drive bays, 8 IP channel inputs (expandable to 96 IP inputs), exacqVision client and server software and Windows 7 Pro OS preconfigured on internal 40GB SSD, keyboard & mouse, redundant universal power supply, DVD-RW, Dual Gigabit NIC, RAID-6		
IPZ08-16TB-R3-RAID	16TB, 12TB Available	\$17,600
IPZ08-20TB-R3-RAID	20TB, 16TB Available	\$19,000
IPZ08-24TB-R3-RAID	24TB, 20TB Available	\$20,400
IPZ08-28TB-R3-RAID	28TB, 24TB Available	\$21,800
IPZ08-32TB-R3-RAID	32TB, 28TB Available	\$23,200

**exacqVision Z-Series IP Server, 4U Rackmount, Connect up to 96 IP Cameras**

<b>4U 20-Bay Rackmount IP Server</b>		
exacqVision Z-Series IP Server, 4U rackmount chassis, 20 front-accessible drive bays, 8 IP channel inputs (expandable to 96 IP inputs), exacqVision client and server software and Windows 7 Pro OS preconfigured on internal 40GB SSD, keyboard & mouse, redundant universal power supply, DVD-RW, Dual Gigabit NIC, RAID-6		
IPZ08-24TB-R4-RAID	24TB, 20TB Available	\$21,900
IPZ08-28TB-R4-RAID	28TB, 24TB Available	\$23,300
IPZ08-32TB-R4-RAID	32TB, 28TB Available	\$24,700
IPZ08-36TB-R4-RAID	36TB, 32TB Available	\$26,100
IPZ08-40TB-R4-RAID	40TB, 36TB Available	\$27,500

<b>Hard Drive + Caddy for all Z-Series Systems</b>		
5000-32000	2TB drive + Caddy for all Z-Series Systems	\$700

**Linux Available on All Systems Above by appending '-L' to the part number**  
e.g.: IPZ-24TB-R4-RAID-L Note: Z-Series Linux option shipped with Linux OS and exacqVision Server installed on 40GB SSD

**For each exacqVision Z-Series IP server:**

- 8 IP camera licenses included
- Up to 96 IP camera licenses can be added
- Three Year Software Updates included as standard, additional years orderable

**exacqVision EL-S**



**exacqVision EL-S & EL-SR – embedded Linux Hybrid NVR Appliance**

- Low cost exacqVision Hybrid NVR Server
- 8 or 16 Analog inputs included, Add up to 24 IP inputs
- D1 240fps H.264 compression on analog channels
- Included gigabit NIC, server-class hard drives, universal power supply
- 3 year warranty + 3 year software updates (SSA)

**exacqVision EL-S Hybrid NVR Servers - 1.5U Rackmount, 8 or 16 Analog Inputs**

List Price

<b>exacqVision EL-S 8: 8-input embedded Linux Hybrid NVR Appliance - 240 ips @ D1</b>		
exacqVision EL-S, 8 analog inputs included with 8 loop-thru, add up to 24 IP inputs, 240 ips @D1, 2 analog outputs, 4 TTL alarm inputs, 2 TTL alarm outputs, 1 relay output, 4 audio inputs, RS232/485 PTZ port, Watchdog, exacqVision client and server software and Linux OS preconfigured on internal flash drive, keyboard and mouse, universal power supply		
0800-24-0250-ELS	250GB	\$3,060
0800-24-0500-ELS	500GB	\$3,150
0800-24-1000-ELS	1000GB	\$3,325
0800-24-2000-ELS	2000GB	\$3,675

<b>exacqVision EL-S 16: 16 input embedded Linux Hybrid NVR Appliance - 240 ips @ D1</b>		
exacqVision EL-S, 16 analog inputs included, add up to 24 IP inputs, 240 ips @D1, 2 analog outputs, 4 TTL alarm inputs, 2 TTL alarm outputs, 1 relay output, 4 audio inputs, RS232/485 PTZ port, Watchdog, exacqVision client and server software and Linux OS preconfigured on internal flash drive, universal power supply		
1600-24-0250-ELS	250GB	\$3,460
1600-24-0500-ELS	500GB	\$3,550
1600-24-1000-ELS	1000GB	\$3,725
1600-24-2000-ELS	2000GB	\$4,075



List Price

<b>exacqVision EL-SR 8: 8-input embedded Linux Hybrid NVR Appliance - 240 ips @ D1</b>		
exacqVision EL-SR, 8 analog inputs included with 8 loop-thru, 240 ips @D1, 2 analog outputs, add up to 24 IP inputs, 4 TTL alarm inputs, 2 TTL alarm outputs, 1 relay output, 4 audio inputs, RS232/485 PTZ port, Watchdog, exacqVision client and server software and Linux OS preconfigured on internal flash drive, two front-accessible removable drive bays, keyboard and mouse, universal power supply.		
0800-24-0500-ELSR	500GB	\$3,325
0800-24-1000-ELSR	1TB	\$3,500
0800-24-2000-ELSR	2TB	\$3,850
0800-24-4000-ELSR	4TB	\$4,550

<b>exacqVision EL-SR 16: 16 input embedded Linux Hybrid NVR Appliance - 240 ips @ D1</b>		
exacqVision EL-SR, 16 analog inputs, 240 ips @D1, 2 analog outputs, add up to 24 IP inputs, 4 TTL alarm inputs, 2 TTL alarm outputs, 1 relay output, 4 audio inputs, RS232/485 PTZ port, Watchdog, exacqVision client and server software and Linux OS preconfigured on internal flash drive, two front-accessible removable drive bays, universal power supply.		
1600-24-0500-ELSR	500GB	\$3,475
1600-24-1000-ELSR	1TB	\$3,650
1600-24-2000-ELSR	2TB	\$4,000
1600-24-4000-ELSR	4TB	\$4,700

- From 1 to 24 IP Cameras can be added
- Order IP Camera Licenses on Page 13
- One Year Software Updates included as standard, additional years orderable on Page 14
- Server Hardware Options on Page 15

**exacqVision<sup>EL</sup>**

**exacqVision EL-Series – embedded Linux IP NVR Appliance**

- Low cost, Compact, Embedded, Configurable exacqVision IP Servers
- Up to 24 IP inputs
- Compatible with exacqVision Pro & exacqVision START VMS
- Included gigabit NIC, server-class hard drives, universal power supply
- 3 year warranty + 3 year software updates (SSA)



List Price

<b>EL Mini IP Server</b> Dimensions (WxHxD): 10.5x2.5x11.5 in / 267x63x292 mm exacqVision EL-Series IP Server, Compact mini chassis, exacqVision client and server software and Linux OS preconfigured on internal flash drive, enterprise-class hard drive, universal power supply, keyboard and mouse, Gigabit NIC.		
IPS-0500-ELM	500GB	\$1,650
IPS-1000-ELM	1TB	\$1,825
IPS-2000-ELM	2TB	\$2,175



<b>EL Toaster IP Server with two drive bays</b> Dimensions (WxHxD): 4.02x5.91x8.50 in / 102x150x216 mm exacqVision EL-Series IP Server, Compact chassis, exacqVision client and server software and Linux OS preconfigured on internal flash drive, enterprise-class hard drives with two front-accessible removable drive bays, universal power supply, Dual Gigabit NIC. No keyboard or mouse.		
IPS-0500-ELT	500GB	\$1,950
IPS-1000-ELT	1TB	\$2,125
IPS-2000-ELT	2TB	\$2,475
IPS-4000-ELT	4TB	\$3,175



List Price

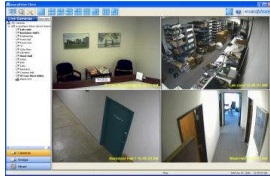
<b>EL-IP Rackmount - 1.5U IP Server with two drive bays</b> exacqVision EL-Series IP Server, 1.5U rackmount chassis, exacqVision client and server software and Linux OS preconfigured on internal flash drive, enterprise-class hard drives with two front-accessible removable drive bays, universal power supply, keyboard and mouse, Gigabit NIC.		
IPS-0500-ELIP	500GB	\$2,095
IPS-1000-ELIP	1TB	\$2,270
IPS-2000-ELIP	2TB	\$2,620
IPS-4000-ELIP	4TB	\$3,320

<b>EL-IP Rackmount Dual Gbit NIC Option</b> Dual GB NIC option for EL-IP Servers. Order-time option only. Append part number with '-DN'		
e.g. IPS-1000-ELIP-DN	Dual GB NIC order-time option for EL-IP Servers above	\$280



List Price

<b>EL-1U Rackmount - 1U IP Server with four drive bays</b> Dimensions (WxHxD): 19x1.75x22.5 in / 482.6x44.45x571.5 mm exacqVision EL-Series IP Server, 1U rackmount chassis, exacqVision client and server software and Linux OS preconfigured on internal flash drive, enterprise-class hard drives, keyboard & mouse, universal power supply, DVD-RW, Dual Gigabit NIC.		
IPS-2000-EL1U	2TB	\$3,500
IPS-4000-EL1U	4TB	\$4,200
IPS-6000-EL1U	6TB	\$4,900
IPS-8000-EL1U	8TB	\$5,600
IPS-4000-EL1U-RAID	RAID5, 4TB, 3TB Available	\$5,400
IPS-8000-EL1U-RAID	RAID5, 8TB, 6TB Available	\$6,800



**exacqVision Pro VMS**

- **exacqVision Pro IP Camera Licenses**
- **exacqVision Enterprise Server**
- **Enterprise Health Monitor for exacqVision**

**exacqVision Pro IP Camera Software Licenses**

List Price

New or Add-on License		
IP camera licenses for installing on exacqVision IP and Hybrid Servers, and on third-party servers.		
IP cameras are licensed per server. For each server, specify the quantity of IP camera licenses desired. For third-party servers, include server MAC address.		
All IP camera licenses come standard with one year of software updates, three years if ordered with an exacqVision server. Software Subscription Agreement available for additional years of updates		
EVIP-01	Single IP camera license	\$150

**Ordering Info:**

- Enter quantity of cameras per Server
- exacqVision A-Series Hybrid Servers come with 4 or 8 IP camera licenses included
  - o add up to 56 more maximum for a total of 64 maximum
- exacqVision A-Series IP Servers come with 0 IP camera licenses installed
  - o add from 1 to a maximum of 64 per EL server
- exacqVision EL-Series Hybrid & IP Servers come with 0 IP camera licenses installed
  - o add from 1 to a maximum of 24 per EL server
- exacqVision Z-Series Hybrid and IP Servers come with 8 IP camera licenses installed
  - o add up to 88 more maximum for a total of 96 per server
- exacqVision VMS Software installed on third-party servers:
  - o add from 1 to a maximum of 64 per server
  - o MAC address of each server required to generate license key
  - o Licensing the MAC address of a removable NIC device recommended if transfer of license to a different server is anticipated. The removable NIC can follow to the new server, with the license intact.

**exacqVision Enterprise Server Option for exacqVision Pro**

List Price

Enterprise Server Option		
Enterprise Server Option sold per-server, regardless of the number of cameras		
Enterprise Server Option available with exacqVision Pro VMS software		
Enterprise Server Options adds enterprise server and enterprise user-related features, including Active Directory, multi-level nested mapping, enterprise user administration, and more.		
Enterprise Server Option Software Subscription Agreement (SSA) available for additional years of updates		
EVES-01	exacqVision Enterprise Server Option	\$500

**Ordering Info:**

- EVES available on any exacqVision Pro VMS server, including exacqVision A-Series Hybrid & IP; exacqVision Z-Series Hybrid & IP, exacqVision EL-Series Hybrid & IP, and on third-party servers.
- EVES is sold per-server, regardless of number of cameras
- EVES is activated through Server license key
- Software Update Subscription available for EVES

**Enterprise Health Monitor for exacqVision**



List Price

Enterprise Health Monitor for exacqVision		
Enterprise Health Monitor available for all exacqVision A-Series, EL-Series and Z-Series IP and Hybrid Servers. Requires Enterprise Server Option with current SSA.		
Enterprise Health Monitor available exclusively through exacqVision Certified Resellers		
EHM-01	Enterprise Health Monitor for exacqVision	\$995



**exacqVision START:**

- Essential IP Video Management Software
- Up to 30 IP Cameras/Server

**exacqVision START IP Camera Software Licenses**

**List Price**

New or Add-on License		
	Quantity Purchased:	
START-01-03	1 to 3 START licenses	\$49.95
START-04-08	4 to 8 START licenses	\$47.50
START-09-15	9 to 15 START licenses	\$45.00
START-16-30	16 to 30 START licenses	\$42.50

**exacqVision START to Pro License Upgrade**

START-PRO Upgrade	exacqVision START to PRO Upgrade, per IP camera	\$100.00
-------------------	---	----------

**exacqVision START Software Update Subscription (SSA)**

exacqVision Start Software Subscription Agreement (SSA) - IP Cameras		
exacqVision START comes standard with one year Software Updates (SSA). Additional years of SSA can be purchased.		
SSA-START-01	Each additional year of SSA, per IP camera	\$9.95

**Start Info:**

- exacqVision Start is compatible with any exacqVision EL-Series or A-Series IP Servers.
- exacqVision Start can also be licensed for third-party servers

## exacqVision Software Update Subscription

- All exacqVision systems include three years of software updates (SSA).
- exacqVision software installed on third-party systems includes one year software updates (SSA).
- Additional years of software updates available through Software Update Subscription.
- All exacqVision software updates can be installed during the active subscription term.

### exacqVision Pro Software Update Subscription

List Price

Software Update Subscription - IP Cameras		
Software update subscription is part of the license key. All cameras on a given server must have the same software update subscription		
Pro-rated software subscriptions are also available on a month-by-month basis for staggered IP license and system purchases.		
SSA-EVIP-01	exacqVision Pro SSA - each additional year, per camera	\$25

Software Update Subscription - exacqVision A-Series & Z-Series Hybrid Servers with exacqVision Pro VMS		
Special flat-rate price for exacqVision Hybrid systems with exacqVision Pro software, covers both analog cameras + 8 IP cameras that come standard with all Hybrid servers. Additional IP camera licenses and updates are purchased separately.		
First Three Years	Included in Price	\$0
SSA-0408-01	Hybrid 4-input servers (DT) - each additional year	\$150
SSA-1608-01	Hybrid 16-input servers (DT, 2U, 4U, Z) - each additional year	\$300
SSA-3208-01	Hybrid 32-input servers (2U, 4U, Z) - each additional year	\$500
SSA-4808-01	Hybrid 48-input servers (4U, Z) - each additional year	\$700
SSA-6408-01	Hybrid 64-input servers (4U, Z) - each additional year	\$900

Software Update Subscription - exacqVision EL-S with exacqVision Pro VMS		
Special flat-rate price for exacqVision EL-S servers with exacqVision Pro software, includes all analog cameras. Up to 24 IP camera licenses and updates can be added separately		
First Three Years	Included in Price	\$0
SSA-EL08-01	exacqVision EL-S 8 - each additional year	\$100
SSA-EL16-01	exacqVision EL-S 16 - each additional year	\$200

Software Update Subscription - exacqVision Enterprise Server Option (EVES)		
Software update subscription for exacqVision Enterprise Server Option. Must have same expiration date as IP Cameras Software Update Subscription.		
SSA-EVES-01	Enterprise Server Option - each additional year, per server	\$83.50

Renewal of Expired exacqVision Pro License		
Rate for renewal of expired software update subscriptions. Price is per year, from the date of expiration.		
SSAR-EVIP-0X	Single IP camera license; x = number of years	\$40
SSAR-0408-0X	4-channel Hybrid systems; x = number of years	\$240
SSAR-1608-0X	16-channel Hybrid systems; x = number of years	\$480
SSAR-3208-0X	32-channel Hybrid systems; x = number of years	\$800
SSAR-4808-0X	48-channel Hybrid systems; x = number of years	\$1,200
SSAR-6408-0X	64-channel Hybrid systems; x = number of years	\$1,400
SSAR-ELS8-0x	exacqVision EL-S 8 systems; x = number of years	\$150.00
SSAR-ELS16-0x	exacqVision EL-S 16 systems; x = number of years	\$300.00
SSAR-EVES-0x	exacqVision Enterprise Server Option; x = number of years	\$125

Server License Transfer Fee		
Cost to transfer IP camera license key to another server MAC address. Include MAC address of both old and new server. It is recommended to use a removable NIC card or USB NIC if moving servers will be anticipated.		
EVIP-Transfer	Server License transfer fee to new MAC address	\$125

**exacqVision** Server Hardware Options & Accessories

exacqVision Server Hardware Options & Accessories

List Price

<b>Workstation Upgrade Options for A-Series 2U &amp; 4U Hybrid &amp; IPS Servers</b>		
Workstation upgrades provide enhanced client performance when running client & server on the same system. Can also provide enhanced performance when running the Webserver. Workstation upgrades are available on all exacqVision 2U and 4U Hybrid and IPS Servers including iSCSI servers, Not available for desktop servers or for exacqVision EL.		
5000-40330	Core 2 Duo Dual + 2GB additional RAM <i>Recommended option for enhanced client-on-server performance</i>	\$375
<b>Other Options</b>		
5000-40340	Core 2 Duo Quad + 2GB additional RAM	\$695
5000-40310	Dual Xeon + 2GB additional RAM	\$475
5000-40320	Quad Xeon + 2GB additional RAM	\$815
<b>Windows Server Operating System Options</b>		
Microsoft Windows Server (2003 & 2008) is available as an order-time option on all exacqVision A-Series 2U, 4U & DT Hybrid and IPS servers, and Z-Series IP servers. Not available on exacqVision EL-S or L-Series		
5000-40215	Microsoft Windows 2008 Server OS option	\$1,295
<b>A-Series Additional NIC Options</b>		
Dual GB NIC options for all exacqVision A-Series Hybrid and IPS servers. Quad GB NIC options available in A-Series IPS 4U servers only		
5000-40140	Dual NIC Option - 2U A-Series IPS Servers	\$95
5000-40142	Dual NIC Option - 2U A-Series Hybrid Servers	\$345
5000-40144	Dual NIC Option - A-Series Desktop & 4U Hybrid & IP Servers	\$95
5000-40145	Quad NIC Option - 4U IPS A-Series Servers	\$1,095
<b>EL Accessories</b>		
5000-64100	Rack Mount Kit for exacqVision EL-S, ELIP	\$98.00
5000-64150	Wall Mount Kit for exacqVision EL-S, ELIP	\$75.00
<b>Rackmount Sliding Rail Kits</b>		
5000-20050	20" Rackmount Sliding Rail Kit for exacqVision 2U and 4U chassis	\$93
5000-20060	26" Rackmount Sliding Rail Kit for exacqVision 2U and 4U chassis	\$120
5000-64100	Rack Mount Kit for exacqVision EL-S, EL-SR, EL-IP	\$98
<b>Additional or Spare Hard Drives</b>		
5000-20500	500GB drive + Caddy for 4U RAID-5 systems	\$395
5000-21000	1000GB drive + Caddy for 4U RAID-5 systems	\$595
5000-22000	2000GB drive + Caddy for 4U RAID-5 systems	\$700
5000-30500	500GB drive for 2U A-Series systems	\$395
5000-31000	1000GB drive for 2U A-Series systems	\$595
5000-32000	2000GB drive for 2U A-Series systems	\$700
5000-32000	2TB drive + Caddy for all Z-Series Systems	\$700
<b>Redundant Power Supply Option - A-Series</b>		
5000-40100	Redundant Switching Power Supply for 4U Rackmount A-Series	\$895
5000-40120	Redundant Switching Power Supply for 2U Rackmount IPS A-Series	\$895
<b>exacqVision Technical Reseller Training</b>		
One-day technical training. Available to all exacqVision Resellers.		
TRAINING-01	exacqVision Technical Reseller Training	